

XXI World
University Championship

ORIENTEERING

Kuortane • FINLAND

July 17th to 21st
2018

www.wuoc2018.com



**B
U
L
L
E
T
I
N
1**



December 2017

FOREWORD

The very first World University Orienteering Championship was organized in 1978 in Jyväskylä, Finland. 129 athletes from 17 countries took part in the competitions. The host country was not too polite to its guests, however, as Finnish athletes won gold medals in the individual competitions of both men and women along with the relays.

Liisa Peltola (formerly known as Veijalainen) was crowned as the first World University Champion in the women's category. She was already a merited world-class athlete who had won gold medal in the 1976 IOF World Championships. Since then, the WUC Orienteering has established its place as an important event, where the future stars challenge some of the world's best athletes.

In 40 years the World University Orienteering Championship has grown remarkably and doubled the number of participants and participating countries. It is truly one of the jewels in the FISU championships' programme. In FISU Gala 2017, the WUC Orienteering in Miskolc, Hungary, was awarded as "The Best World University Championship in 2016". At the same occasion, IOF was nominated as "The Best International Sport Federation".

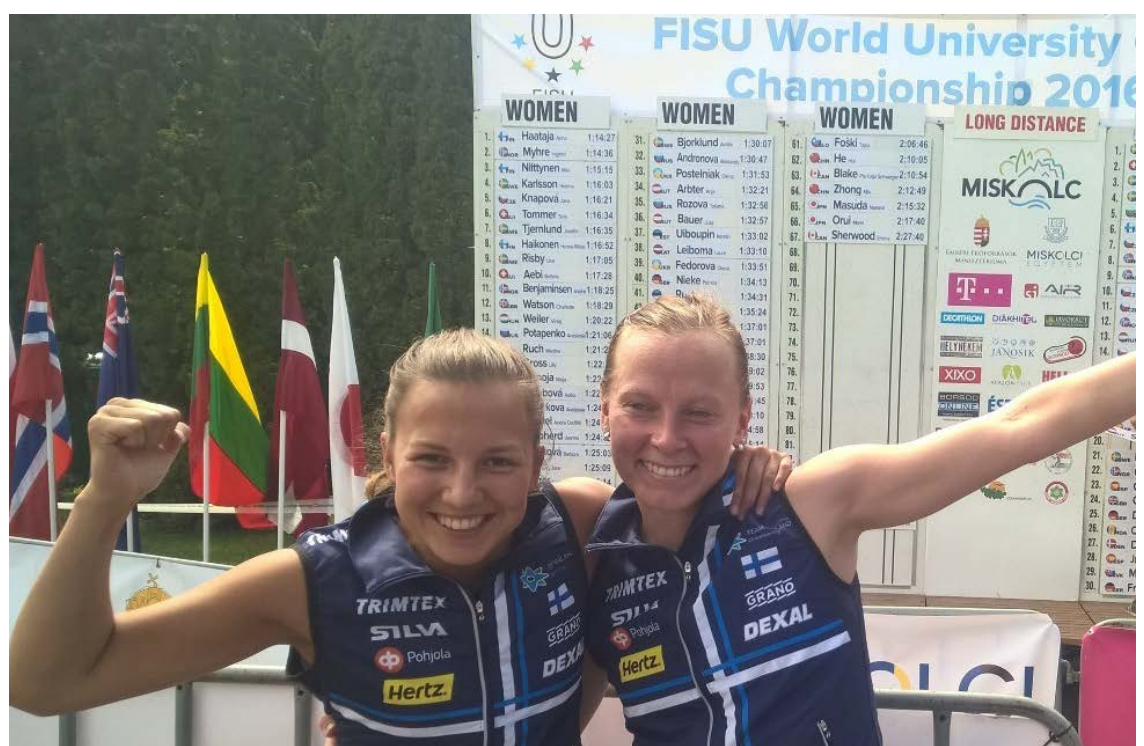
All the above-mentioned is putting us, the organizers of the 21st WUC Orienteering, to a real test. The preparations for the championships have progressed smoothly, though, and after the FISU inspection visits we are even more convinced of being on the right track. Kuortane Sports Institute has already hosted two FISU championships – floorball 2008 and wrestling 2012 – and showed its quality as an organizer providing the participants with all the services needed. There's a lot of work still to be done, but in July 2018 everything will be ready for the games to begin. We are happy and excited to welcome you all to the Kuortane Athletes' Village, the home of the World University Orienteering Championships 2018!

Jukka Tirri

Vice-chair of the Organizing Committee

Leader of the Finnish team in WUC Orienteering 2012-2016

University sport manager, Finnish Olympic Committee



KUORTANE, LAPUA AND SEINÄJOKI

The Organizing Committee warmly welcomes you to the 21st World University Orienteering Championship 2018 which will be held on 17th – 21st of July 2018 in Kuortane, Lapua and Seinäjoki in Western Regions of Finland.

The Championship Event Center/Athletes' Village will be located at Kuortane Sport Resort/Olympic Training Center, the same venue, where the 3rd World University Floorball Championship and the 10th World University Wrestling Championship were successfully arranged in 2008 and 2012.

Kuortane is a small, lively municipality in Southern Ostrobothnia with an area of 485 km² and a population of about 4.000. Kuortane is set in a peaceful countryside environment on an idyllic lakeside. Kuortane is proven to be one of the safest surroundings in Finland (survey in 2015). The village is best known for the Sports Resort and the Sports High School.

Lapua is a vibrant town with its 14,800 inhabitants in South Ostrobothnia. Lapua has a rich cultural life and there are a wide range of leisure facilities to choose from. Thanks to the cultivated wide plains, rivers and Simpsiö hill, Lapua also provides a wide variety of landscapes to enjoy the serenity of nature.

Seinäjoki is the centre of South Ostrobothnia and one of the fastest growing urban areas in Finland. Seinäjoki 's population is 61,500. Formed by nine municipalities, the urban area of Seinäjoki has a population of 150,000.

Seinäjoki offers high-quality education from comprehensive school to university level as well as good employment opportunities and, as Finland's sixth largest market area, very competitive and attractive commercial services.

Seinäjoki is well known for its unique administrative and cultural centre, The Aalto Centre, designed by the architect and academic Alvar Aalto, as well as for its summer events e.g. Provinssirock, Solar Sound, Tangomarkkinat, and Vauhtiajot.

ORGANIZERS

On behalf of the International University Sports Federation (FISU), the World University Orienteering Championship 2018 will be organized by

- Kuortane Sports Resort/Olympic Training Center
- Finnish Olympic Committee
- Finnish Orienteering Federation



Finland
Kuortane
OLYMPIC TRAINING CENTER

in co-operation with

- Finnish Student Sports Federation
- Municipality of Kuortane
- City of Lapua
- City of Seinäjoki and
- local orienteering clubs

SCHEDULE

| July 2018 | Programme |
|----------------------------------|--|
| Saturday 14th | Arrivals and accreditation |
| Sunday 15th | Arrivals and accreditation, training (optional, self-service) |
| Monday 16th | Model event (forest), 1 st General Technical Meeting, WUOC Opening Ceremony |
| Tuesday 17th | WUOC Sprint Relay |
| Wednesday 18th | WUOC Middle Distance |
| Thursday 19th | WUOC Sprint |
| Friday 20th | WUOC Long Distance |
| Saturday 21st | WUOC Relay, Closing Ceremony, Banquet, Departures |
| Sunday 22nd | Departures |

COMPETITION RULES

The FISU Regulations for World University Championships and the Competition Rules for the IOF Foot Orienteering events (valid from 1st of January 2018) will be followed in the event.

PARTICIPANTS Only the competitors, who satisfy the following conditions may take part in a FISU World University Championships in 2018:

- must be a national of the country they represent;
- must be at least 17 and less than 25 years of age on January 1st in the year of the event; for 2018, athletes must be born between the 01/01/1993 and the 31/12/2000
- have to be students who are currently officially registered as proceeding towards a degree or diploma at a university or similar institute whose status is recognised by the appropriate national academic authority of their country;
- have to be former students of the institutions mentioned above, who have obtained their academic degree or diploma in the year preceding the event

Each country may enter a maximum of seventeen (17) persons of which twelve (12) competitors with maximum of six (6) males and six (6) females and five (5) officials.

Each country may enter in:

| | |
|-----------------|---|
| Long distance | four (4) males and four (4) females |
| Middle distance | four (4) males and four (4) females |
| Sprint distance | four (4) males and four (4) females |
| Relay | two (2) male teams of three (3) persons and two (2) female teams of three (3) persons |
| Mixed Relay | one (1) team of two (2) female runners and two (2) male runners |

REGISTRATION AND FEES

Deadlines for Entries

| | |
|---|--|
| General Entries | By 17th January 2018 |
| Quantitative Entries 25 % deposit of participation fees | By 17 th of April 2018 |
| Individual Entries Travel schedules of the delegations Media Individual Entries | By 17 th of June 2018 |
| Balance of participation fees | Upon arrival/by invoice |
| Final confirmation of competitors | At 1 st General Technical Meeting |

All the general, quantitative and individual entries as well as travel schedules for each person should be filled in online, using FISU's new online accreditation system at:

<https://accreditation.fisu.net/Pages/Home.aspx>.

FISU has provided all National University Sports Federations the passwords for the system.

The Organizing Committee would like to emphasize already at this early stage the great importance of following the deadlines for the entries. Entries arriving after the expiration of the required deadlines will not be taken into consideration

FISU Registration Fees

FISU shall receive from each competing country the following FISU registration fees:

- member-associations of FISU: 20 Euros per participant
- non-member associations: 40 Euros per participant

These fees will be invoiced to the participating delegations by FISU.

Participation Fees to the Organizing Committee (full board and event services):

- a participation fee of 70 Euros per person per night
- extra officials will pay a participation fee of 140 Euros per person per night

The Organizing Committee will provide you with invoices by request for the payment of the participation fees or the fees may be paid to the following bank account:

Kuortane Sports Institute
SWIFT: NDEAFIHH
IBAN: FI9511923000000901
Ref. 81708

VISA REQUIREMENTS AND TRAVEL DOCUMENTS ACCEPTED BY FINLAND

The Schengen states have jointly agreed which countries' citizens are required to present a visa. Each Schengen state decides which passports and travel documents it accepts from different countries' citizens.

Even if you did not need a visa to visit Finland, you need a valid passport or some other travel document accepted by Finland. It must be valid for at least ninety days after your intended date of departure from the Schengen area.

In addition, the passport or other travel document must have been issued no later than ten years ago.

In case you do not need a visa, you can stay in Finland or in the territory of other Schengen state for ninety days in any 180-day period.

For more information on visa requirements and travel documents accepted by Finland please visit: <http://formin.finland.fi/public/default.aspx?nodeid=15720>

Visas have to be applied for at your nearest Finnish Embassy. For a list of Finland's missions abroad, please visit:

<http://formin.finland.fi/public/default.aspx?nodeid=17195&contentlan=2&culture=en-US>

Please remember to start your visa application procedure in time!

EVENTS CENTER/ATHLETES' VILLAGE (please visit <http://www.kuortane.com/en/>)

The Event Center/Athletes' Village of the Championship is located at Kuortane Sport Resort's campus area. The campus offers high standard accommodation, catering services, meeting rooms and sports facilities for all participants.

All the team officials' meetings will be held at the Event Center.

The Athletes' Village will be open from Saturday 14th till Sunday 22nd of July 2018.

For teams interested in arriving in Kuortane earlier, the Sports Resort is happy to make a pre-camp offer. Please contact Ms Riina Pakkala, e-mail: riina.pakkala@kuortane.com.



Accommodation Kuortane Sports Resort offers more than 500 beds in dormitories and in hotel, which all are located within walking distance from the other Sport Resort's services and facilities.

All participants will be accommodated mainly in double rooms or in twin double rooms.



Catering All restaurants and cafés of the Sports Resort will serve the Championships. During the Championship week the Buffet Restaurant offers daily breakfast, lunch and dinner for all participants, officials and guests.

On some days due to the tight time schedule, lunch will be served at the finish areas of the races.

ACCREDITATION The accreditation office will be at Kuortane Sports Resort. All participants must obtain accreditation from International Control Commission of FISU and from the Local Organizing Committee (LOC).

TRANSPORTATION

A bus/car transport for arriving and departing participants will be arranged from/to **Vaasa airport** (VAA, 110 km) or **Seinäjoki train station** (40 km) to/from Kuortane according to their arrival and departure schedules received by 17th of June 2018.

Transfers/transportation from Helsinki (appr. 360 km/5 hours by bus) and Tampere (appr. 170 km/2 hours by bus) can be organized by the LOC against separate fee.

More information on trains from Helsinki/Tampere to Seinäjoki can be found at: <https://www.vr.fi/cs/vr/en/frontpage>. There are daily many train connections from Helsinki airport to Seinäjoki.

LOCAL WEATHER CONDITIONS

| July | Average | Maximum | Minimum |
|---------------|---------|-------------------------|---------|
| Temperature | 17,2 C | 23,6 C | 6,4 C |
| Precipitation | 75 mm | yearly average 515 | |
| Sunshine | 270 hrs | yearly average 1700 hrs | |

INFORMATION AND MEDIA

The official website for WUC Orienteering 2018 is online at www.wuoc2018.com. On Facebook you can find us by name: WUC Orienteering 2018. The contents of the pages are updated continuously.

There will be a media center in Kuortane, with facilities for interviews and daily media briefings for local and international media. Media representatives and any other official representatives are requested to register by contacting the LOC.

MEDICAL

Doping controls will be organized during the championship by the Finnish Antidoping Agency in accordance with the FISU and the IOF guidelines.

EMBARGOED AREAS

With reference to the Competition Rules for IOF Foot Orienteering Events, the listed areas are out of bounds for all potential WUOC 2018 team members (competitors, team leaders, coaches, doctors, escorts, etc.) and other persons who, through their knowledge of the terrain or the events, may influence the result of the competitions being held during WUOC 2018.

Spelt out in detail this means:




- no organized orienteering activities may take place in these areas.
- no training sessions, i.e. running/races, testing routes may take place in these areas.
- no-one with potential connection to a team (athletes or others) may visit the embargoed areas.

Offences must be reported to the Competition Manager Jukka-Pekka Sorvisto at the WUOC 2018 Office, e-mail: wuoc2018@kuortane.com.

Copies of the most recent versions of the orienteering maps of the embargoed areas are published on the website of WUOC 2018.

Embargoed areas of WUOC 2018 and previous O-maps:

(bigger maps for embargoed areas and previous maps are available on website at www.wuoc2018.com).

| No. | Area | Previous O-maps (only latest editions) |
|-----|---|--|
| 1. | Seinäjoki (sprint and sprint relay)  | Jouppilanvuori (2007) – 1:5000 Kivistö (2010) – 1:5000 Marttila (2011) – 1:5000 Sairaanhoido-oppilaitos (2007) -1:5000 Törnävä (2016) – 1:4000 |
| 2. | Lapua (middle distance)  | Virpimäki (2006) -1:10000 |
| 3. | Kuortane (long distance and relay)  | Oijoosvuori (1986) – 1:15000 |

MAP DETAILS

| WUOC Competition map | Scale | Contour interval |
|----------------------|----------|------------------|
| Sprint Relay | 1:4 000 | 2 m |
| Middle Distance | 1:10 000 | 2,5 m |
| Sprint | 1:4 000 | 2 m |
| Long Distance | 1:15 000 | 2,5 m |
| Relay | 1:10 000 | 2,5 m |

Maps are drawn according to the International Specification for Orienteering Maps (ISOM2017) and the International Specification for Sprint Orienteering Maps (ISSOM2007).

PECULIARITIES

The special symbol of ant nest has a country-specific marking in the control descriptions: a brown cross (see below).

The special symbol of the tar-burning pit has a country-specific marking in the control descriptions: a circle (see below).



ant nest



ant nest



tar burning pit



tar-burning pit

TERRAINS DESCRIPTIONS

| WUOC 2018 Sprint Relay | |
|------------------------|--|
| Land form | Flat area between 80-90 meters asl. |
| Vegetation | Parks and urban areas. |
| Runnability | Excellent. |
| Visibility | Excellent. |
| Paths and roads | Urban area and developed network of paths. |

| WUOC 2018 Middle Distance | |
|---------------------------|--|
| Land form | Located 50-90 meters asl. Mainly quite a flat terrain. Some gentle hills up to 30 meters height. |
| Vegetation | Mostly old forest with undergrowth. Just some small green parts. Only a few harvested areas. Some swamps also. |
| Runnability | Ranging from very good to good. |
| Visibility | Mostly very good. |
| Paths and roads | Developed network of paths. |

| WUOC 2018 Sprint | |
|-------------------------|--------------------------------------|
| Land form | Flat area between 80-90 meters asl. |
| Vegetation | Parks and urban areas. |
| Runnability | Excellent |
| Visibility | Excellent |
| Paths and roads | Urban area and some developed paths. |

| WUOC 2018 Long Distance and Relay | |
|--|--|
| Land form | Located 110-165 meters asl. Gentle hills up to 40 meters height. Some point or specific features (tar-burning pits, ant nests). Some areas with many stones. |
| Vegetation | Mostly pine and fir forest. Undergrowth in many places. Some green areas and swamps. |
| Runnability | Ranging from good to difficult. |
| Visibility | Ranging from very good to limited. |
| Paths and roads | Developed network of some paths and forest roads. |

PUNCHING AND TIME-KEEPING SYSTEM

Emit punching will be used on all events. There will be emiTag on sprint and sprint relay. All chips and e-cards are provided by WUOC2018 organization.

CLOTHING

There are no regulations applying to runners concerning the type of clothing they choose to wear but organizers recommend using long trousers for the forest events.

It is forbidden to use shoes with spikes in the Sprint and Sprint Mixed Relay competitions.

TRAINING OPPORTUNITIES AND TRAINING MAPS

For all training, a permission has to be obtained from the authorities. Organizing a training without this permission is not allowed. All contact with authorities must be made through Mr Ville Sivén at least 3 weeks before the planned trainings. E-mail: wuoc2018@kuortane.com.

Maps can be purchased laser-printed.

The following areas have been designated as official training areas for teams participating in WUOC 2018. The maps are surveyed and partially drawn between 2016 and 2017.

| No. | Area/Relevant | Previous O-map (latest edition) |
|------------|-----------------------------------|--|
| 1. | Rumavuori (middle / long / relay) | 2017 |
| 2. | Simpsiö (middle) | 2017 |

In all the training forests, number of areas have been designated as out of bounds. It is very important that these areas are respected and kept clear of all training. The areas are marked on the maps.

All controls set out in the training areas must be labelled with the name of the group and the dates when the controls are put out and will be removed.

Prices:

Laser printed maps with controls, per copy

5,00 EUR

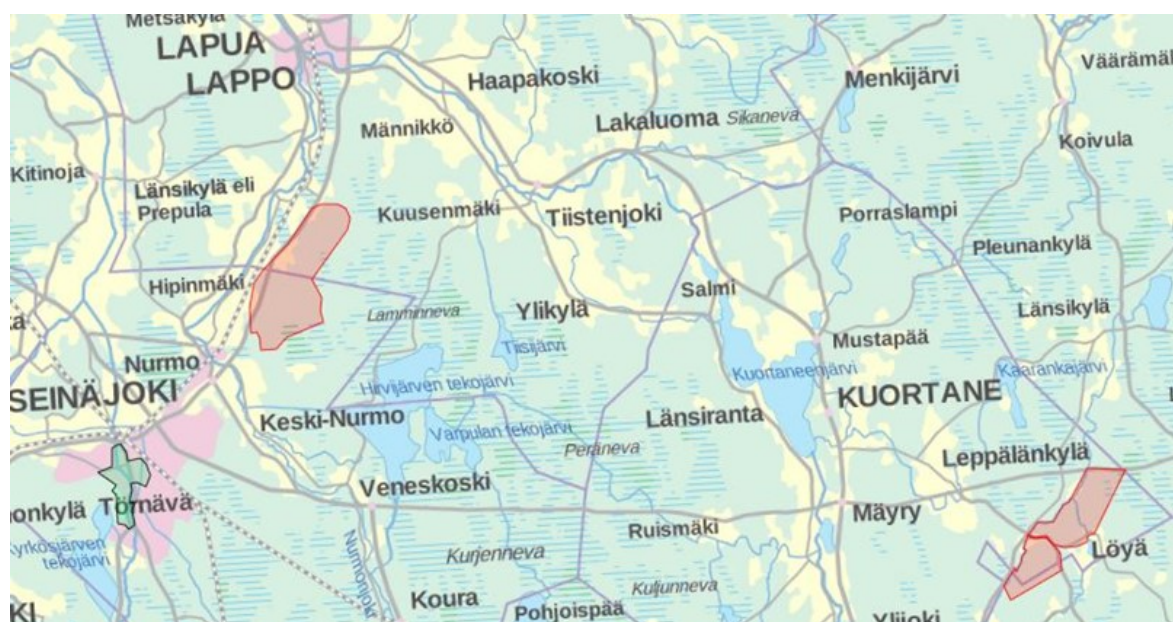
All enquiries about training opportunities should be addressed to:
Mr Ville Sivén - e-mail: wuoc2018@kuortane.com

Please also have an eye on the website wuoc2018.com for updated information about the training arrangements, facilities and maps.

Recommended O-events for WUOC2018:

| | |
|-----------------------|---|
| 5th May 2018 | Lapuan Virkiä |
| 6th May 2018 | Lapuan Virkiä |
| 20th May 2018 | District Championship Kurikka |
| 11th – 13th July 2018 | Merenkurkun Rastipäivät – Kvarkentrafren / Three days mini tour on Vaasa area |
| 14th July 2018 | Relay Cup Kauhava |

Overview map:



FIN5 ORIENTEERING WEEK

A five-day public international orienteering event will be organized during the WUOC2018. The same competition areas and maps will be used as for WUOC 2018. The programme of the FIN5 Orienteering Week will enable participants to witness each and every WUOC medal race.

Schedule (subject to change)

| Date | Fin5 | Arena |
|---------------|--|-----------|
| Sun 15.7.2018 | 1 st Competition day (Middle) | Seinäjoki |
| Mon 16.7.2018 | 2 nd Competition day (Long) § | Seinäjoki |
| Tue 17.7.2018 | Rest day – Open course orienteering | |
| Wed 18.7.2018 | 3 rd Competition day (Middle) | Lapua |
| Thu 19.7.2018 | 4 th Competition day (Sprint) | Seinäjoki |
| Fri 20.7.2018 | 5 th Competition day (Long) | Lapua |

For more information on FIN5 Orienteering Week, please visit: <http://2018.fin5.fi/?lang=en>

LOC CONTACT

Contact information:

Secretary General
 Ms Maarit Laitinen
 Kuortane Sports Resort
 P.O. Box 49
 FIN-63101 Kuortane
 FINLAND
 Tel. +358-6-516 6268
 Fax +358-6-516 6229
 E-mail: maarit.laitinen@kuortane.com
www.wuoc2018.com

Office

E-mail: wuoc2018@kuortane.com

Facebook: WUC Orienteering 2018



Welcome to Finland and WUOC 2018!

